



Honeybourne Road NW6

Parkheath  
*Sold on Service*





## Honeybourne Road, NW6

### £699,950

### Leasehold

- Classic two bedroom lateral apartment
- Located in prime West Hampstead within a well-maintained popular mansion block
- Raised ground floor position
- Bright front facing reception room
- Large 14' master bedroom
- Separate fitted kitchen with ample storage
- Second bedroom/home office
- Beautiful communal garden to rear of block
- Short five minute walk to West Hampstead transport hub and amenities
- EPC Rating: C, Council tax: Camden Band D



**Parkheath**  
*Sold on Service*

**Camden Tax band D**

Belsize Park/Hampstead  
208 Haverstock Hill  
NW3 2AG  
Sales 020 7431 1234  
Lettings 020 7431 3104  
[nw3@parkheath.com](mailto:nw3@parkheath.com)

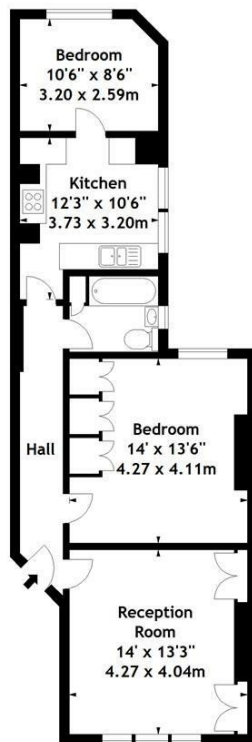
Kensal Rise  
54-56 Chamberlayne Rd  
NW10 3JH  
Tel 020 8960 4845  
[kensal@parkheath.com](mailto:kensal@parkheath.com)

South/West Hampstead  
192 West End Lane  
NW6 1SG  
Sales & Lettings  
Tel 020 7794 7111  
[192@parkheath.com](mailto:192@parkheath.com)

Property Management  
192 West End Lane  
NW6 1SG  
020 7433 6174  
[pm@parkheath.com](mailto:pm@parkheath.com)

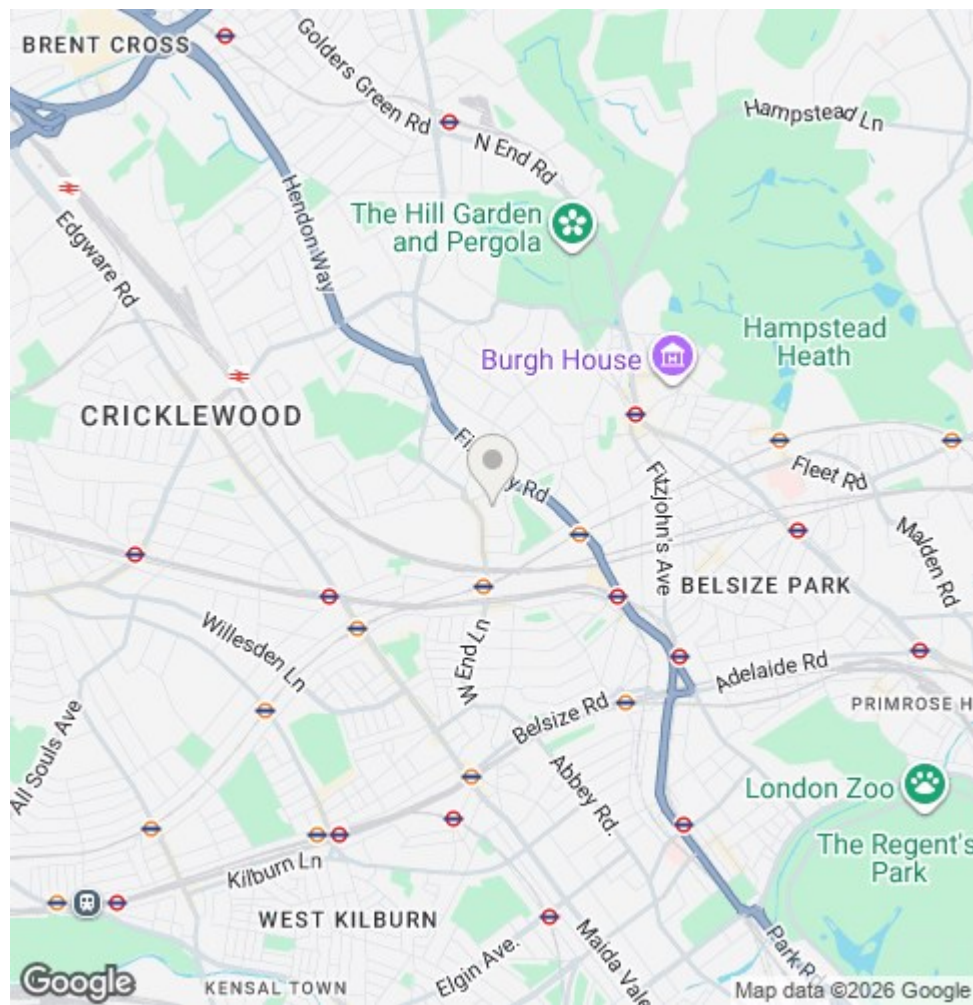
[www.parkheath.com](http://www.parkheath.com)

Yale Court,  
Honeybourne Road, NW6  
Approx. Gross Internal Area  
715 Sq Ft - 66.42 Sq M



Raised Ground Floor

Measured in accordance with RICS guidelines. Every attempt is made to ensure accuracy, however all measurements are approximate. This floor plan is for illustrative purposes only and is not to scale.  
© Datography Ltd 2015  
Photographs \* Floorplans \* Virtual Tours  
Tel: 0845 643 4401 www.datography.com



The particulars do not constitute part of an offer or contract. The particulars, including text, photographs and plans, are for the guidance only of prospective purchasers/tenants and must not be relied upon as statements of fact. The descriptions provided therein represent the opinion of the author and whilst given in good faith should not be construed as statements of fact. Nothing in these particulars shall be deemed a statement that the property is in good condition or otherwise or that any services or facilities are in good working order. All measurements are approximate